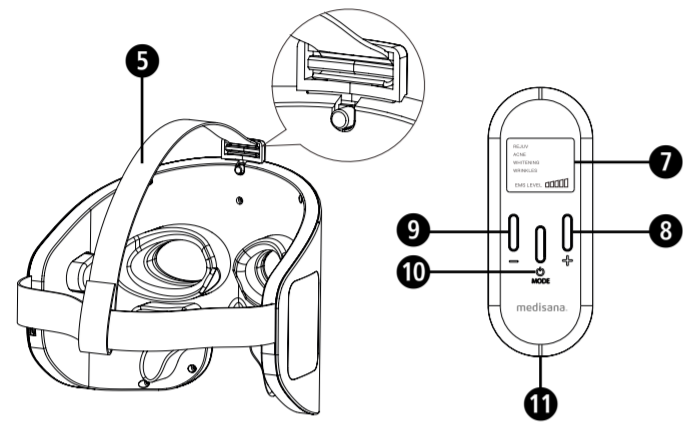
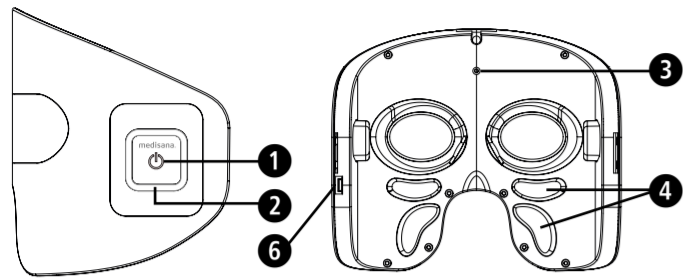


Device and controls



Face Mask

- 1 Power button
- 2 Indicator light
- 3 LED
- 4 EMS
- 5 Adjustable head strap
- 6 USB-C charging port

Remote control

- 7 LCD display
- 8 EMS level + button
- 9 EMS level - button
- 10 Power / Mode button
- 11 Charging indicator

Explanation of symbols



IMPORTANT!

Non-observance of these instructions can result in serious injury or damage to the device.



WARNING

These warning notes must be observed to prevent any injury to the user.



CAUTION

These notes must be observed to prevent any damage to the device.



NOTE

These notes provide useful additional information on the installation or operation.



LOT number



Manufacturer



Recycling symbols/codes:

These are used to provide information about the material and its proper use and recycling.

GB Safety instructions



Read the instruction manual carefully before using this device, especially the safety instructions, and keep the instruction manual for future use. Should you give this device to another person, it is vital that you also pass on these instructions for use.



- This appliance can be used by persons with reduced physical, sensory or mental capabilities or lack of experience and knowledge if they have been given supervision or instruction concerning use of the appliance in a safe way and understand the hazards involved
- The device must only be used for its intended purpose as described in the instruction manual. Using the appliance for any other purpose invalidates the warranty.
- The device is not to be used for commercial use or medical purposes.
- Overuse may lead to a burden on the skin. If there are adverse reactions, it is recommended to stop using.
- Never use or store in high temperature places such as kitchen or car, dusty and places with lots of fireworks. It will shorten the life of the device.
- Recommended to timely charge the device when the power is insufficient. Avoid affecting the battery life.
- Avoid the device drop and collision with sharp objects.
- Liability and warranty are waived in the event of unauthorized repair, misuse, abuse and modification.
- Please keep children away from touching.
- Do not to overexpose to the sun after use, so as not to cause secondary damage to the skin.
- Avoid use on severe suppurative acne or visible facial wounds.
- Patients with severe skin inflammation or especially sensitive skin are advised to try using the device for 1 minute, then continue using it without any adverse reactions.
- Patients suffering from adjunctive hearing, such as ear inflammation, under the supervision of a physician.
- Heavy metal allergy is prohibited.
- Contraindicated in patients with severe heart disease.
- Contraindicated in patients with cardiovascular disease.
- It is not recommended for pregnant, kid and breast-feeding people.
- If facial plastic surgery is performed, the device should be used under the guidance of a doctor.
- Children shall not play with the appliance and cleaning and user maintenance shall not be made by children without supervision.
- Do not to overexpose to the sun after use so as not to cause secondary damage to the skin.
- The following persons shall not use it: Sunburn patients, healthcare workers with diseases involving photosensitivity, and people receiving photosensitive medications.
- Unexpected side effects, such as itching, within 48 hours of first use of the appliance should seek medical advice before further exposure.
- If it does not stop automatically after 10 minutes of use, do not use it and contact after-sales treatment.

About the power supply

- Only charge the unit's battery using the USB charging cable supplied. Never leave the unit unattended when it is connected to the mains (for charging) or in operation.
- Never charge the device in a flammable environment (e.g. flammable objects, gasoline, flammable gases, paint, etc.)
- Only connect the unit for charging so that the cable and power connector are freely accessible.
- The built-in batteries are not intended for replacement or removal by the end user. If problems occur with the power supply, contact the customer service.
- This device must only be supplied at safety extra low voltage (SELV) corresponding to the marking on the appliance. External Adapter rated AC100-240V, output DC5V 1A.
- To disconnect the unit from the mains, always pull the plug out of the power connection. Do not pull on the cable!

Before using the unit

- Check the device carefully for damage before each use. Do not operate a defective device.
- Do not use the device if any damage is visible, if it is not working properly, if it has been dropped or if it has become wet. To avoid hazards, send the unit to the service centre for repair.
- This product has strong light, please purchase qualified goggles, protective glasses can effectively protect 620nm, 470nm, 530nm wavelength of strong light, its light transmittance of 10%.

Intended Use

The **medisana Radiance Trio LED Face Mask LF 300** combines LED technology with EMS micro-current to provide a spa-like experience at home. Featuring red, blue, and green lights, it is tailored to your skin needs. The adjustable strap ensures a comfortable fit, and the remote control with LCD display adds convenience for your self-care routine.

Items supplied and packaging

Please check first of all that the device is complete and is not damaged in any way. In case of doubt, do not use it and contact your supplier or your service centre.

The following parts are included:

- 1 **medisana Radiance Trio LED Face Mask LF 300**
- 1 USB-C charging cable
- 1 instruction manual



WARNING

Please ensure that the polythene packing is kept away from the reach of children! Risk of suffocation!

Charging the device and remote control

- Use a 5V main adapter and connect the supplied USB charging cable to the USB-C port **6** of the device and remote control.
- During charging, the indicator light **2** **11** on the device and remote control will be lighted up in red. The charging time is about 2.5 hours. The device cannot be used during the charging process. When the battery is fully charged, the indicator light **2** **11** will turn blue.

Using the device

- Press and hold the Power button **1** for 2 seconds to switch on the device. The indicator light **2** will be lighted up in blue. Adjust the head strap **5** to fit your head and then put on the device.
- Press the Power/Mode button **10** to switch on the remote control. Press the Power/ Mode button again to switch between 4 treatment modes: REJUV mode, ACNE mode, WHITENING mode, WRINKLES mode. The display **7** on remote control will show the present mode.
- During WRINKLES mode, press the EMS level + button **8** and EMS level - button **9** on the remote control to adjust the EMS intensity between level 1-5.
- Press and hold the Power/Mode button **10** on the remote control for 2 second to turn off the device and remote control simultaneously.



CAUTION

Do not store or use the device in places with high temperature and humidity such as sauna and bathroom, etc.

Troubleshooting

- Skin becomes reddened or trouble occurs after using the product.
 - Sensitive skin may experience some problems after using the product which may only be temporary. It is recommended to discontinue use for 2-3 days before use. If the redness and swelling do not improve after sufficient rest, please consult a specialist before using.
- Can the device also be used while charging?
 - It will be locked automatically in the state of charging and can not be used.
- I experience warmth while using the product.
 - It is completely normal to experience warmth while using, there may be difference in the temperature you feel depending on the skin type and sensitivity. However, if you experience inconvenience due to excessive heat, please stop using the product and seek consultation from the customer service center.

Maintenance and cleaning

It is recommended to clean the equipment regularly, especially the contact area between the equipment and the skin.

- Turn off the device and unplug it from the electrical outlet. Use a dry, clean cloth to gently wipe the outer shell and the skin contact surface of the device.
- Do not use flammable liquids such as alcohol (including perfumes, disinfectants or other alcoholic substances) or acetone to clean this device.
- When not in use for more than a week, be sure to turn off the power supply after separating the regulator and charging connection.

- When the power is low or no power, please make sure to turn off the device and connect the USB cable for charging.
- This product uses lithium battery. In order to increase the life of the product, it is recommended to charge the main unit and the controller at least one every 60 days.
- The LED of this appliance is not replaceable.
- This appliance contains batteries that are non-replaceable.

* *Never immerse the device or any of its parts in water.*

Disposal



This product must not be disposed of together with domestic waste.

All users are obliged to hand in all electrical or electronic devices, regardless of whether or not they contain toxic substances, at a municipal or commercial collection point so that they can be disposed of in an environmentally acceptable manner. Consult your local authority or your supplier for information about disposal.

Technical specifications

Name and model:	medisana Radiance Trio LED Face Mask LF 300
Power supply:	Li-Ion battery 3.7V, 1000mAh Input: 5V = 1A
Max. operating time:	5 minutes, with automatic switch-off
Operating conditions:	+10°C to +35°C, 3% to 75% max. relative humidity
Storage conditions:	-40°C to +70°C, 10% to 90% max. relative humidity
Dimensions (L×W×H):	Approx. 18.2 x 15 x 12 cm
Weight:	Approx. 347 g
Article No.:	50029
EAN No.:	4897138 50029 0

In accordance with our policy of continual product improvement, we reserve the right for technical and design changes without notice.

The current version of these instructions for use can be found at www.medisana.asia

Warranty and repair terms

Please contact your dealer or the service centre in case of a claim under the warranty. If you have to return the unit, please enclose a copy of your receipt and state what the defect is. The following warranty terms apply:

1. The warranty period for **medisana** products is one year from date of purchase. In case of a warranty claim, the date of purchase has to be proven by means of the sales receipt or invoice.
2. Defects in material or workmanship will be removed free of charge within the warranty period.
3. Repairs under warranty do not extend the warranty period either for the unit or for the replacement parts.
4. The following is excluded under the warranty:
 - a. All damage which has arisen due to improper treatment, e.g. non-observance of the user instructions.
 - b. All damage which is due to repairs or tampering by the customer or unauthorised third parties.
 - c. Damage which has arisen during transport from the manufacturer to the consumer or during transport to the service centre.
 - d. Accessories which are subject to normal wear and tear.
5. Liability for direct or indirect consequential losses caused by the unit are excluded even if the damage to the unit is accepted as a warranty claim.

medisana.

Unit E&F, 31/F, YHC Tower, 1 Sheung Yuet Road, Kowloon Bay, Kowloon, Hong Kong



Kam Yuen Plastic Products Ltd.
No.2 Hengfeng Two Road, Pujin Industrial, Gangkou Town, Zhongshan City, Guangdong, China